



## ENDOCAM Performance *HD*

Efficiency in Focus – Brilliance in View



# ENDOCAM Performance HD

Maximize performance, minimize costs

Our camera system in single-chip technology redefines efficiency. ENDOCAM PERFORMANCE HD offers maximum power at a comparatively cost-effective price.



## Brilliance in view

HD technology delivers pin-sharp images.



## Clarity in detail

Extremely high light sensitivity and natural color visualization bring clarity to each detail. Digital Image Processing (D.I.P.) ensures continuous image optimization through permanent monitoring of the digital signal process.

## USB storage in the system

ENDOCAM Performance HD saves at the touch of a button. Images and video sequences are transferred from the USB stick and storage is triggered directly at the camera head.

## Flexibility for all cases

ENDOCAM Performance HD is ideal for interdisciplinary application in endoscopy.

## Comfort in your hand

The uncomplicated, intuitive operation makes ENDOCAM Performance HD particularly easy to use.



# ENDOCAM Performance HD

Strong link for all cases

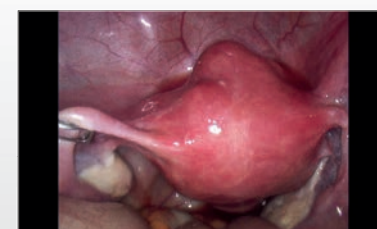
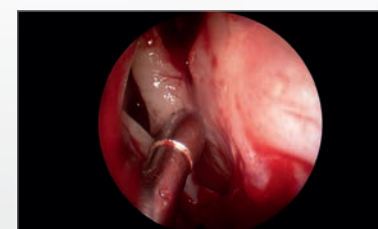
**ENDOCAM Performance HD has been designed for universal endoscopic application.**

The versatility of the system is ensured to a large extent by the C-Mount camera connector. It facilitates direct connection of the camera and endoscope. C-Mount lenses are supplied for many areas of application and have been designed optimally for the camera and endoscope.

## ENDOCAM Performance HD

### for rigid endoscopes

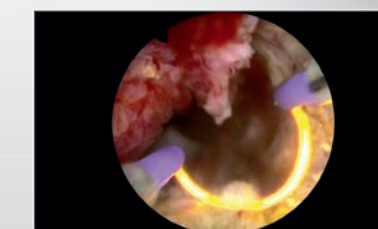
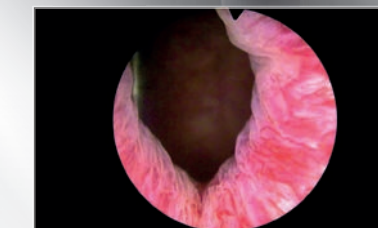
The entire spectrum of endoscopy can be covered if combined with a zoom lens.



## ENDOCAM Performance HD

### for resection

Our matching C-Mount pendulum lens optimizes the ENDOCAM Performance HD System for resection and all applications where the endoscope is freely rotatable in application.



## ENDOCAM Performance HD

### for flexible endoscopes

The right combination for flexible endoscopes: C-Mount lens with optimized focal length or a zoom lens ensure the right image section and the digital anti-Moiré filter incorporated in the camera optimizes the result.





Performance in the right light

We recommend the combination of ENDOCAM Performance HD with our excellent LED light sources. These have an illuminant with a long service life and the operating costs are significantly reduced. The uniform, flicker-free illumination and the real-life, detailed color visualization exert a positive effect on the endoscopic image. We recommend the ENDOLIGHT LED 2.1 high-power LED light source for surgical applications and body cavities with increased light requirement (e.g. bladder).

ENDOCAM Performance HD + ENDOLIGHT LED 1.1



- Light power for the two LED light sources 1.1 and 1.2 are equivalent to 180 watt xenon light
- Manual light control
- Light connection socket for Richard Wolf light cable

ENDOCAM Performance HD + ENDOLIGHT LED 1.2



For everyone who wants more. More comfort and additional smart features make this set the right choice for high-level users.

- Multifunction light socket for light cables from different manufacturers
- Remote standby at the camera head for switching the light on and off
- Light cable recognition - standby, if the light cable is removed
- SAFE START function: If an interruption to the operating voltage of less than 10 sec. occurs, the light source switches back on automatically. After longer voltage outages, the high-power light source initially switches to standby for safety reasons.

ENDOCAM Performance HD + ENDOLIGHT LED 2.1



Light power of LED light source 2.1 is equivalent to 300 watt xenon light and therefore also meets the requirements for maximum illuminance.

- Light connection socket for Richard Wolf light cable
- Remote standby at the camera head for switching the light on and off
- Light cable recognition – standby, if the light cable is removed
- SAFE START function (see LED 1.2)
- Extremely quiet, practically inaudible
- 80% energy saving compared with xenon

**ENDOCAM Performance HD Set 50 Hz**  
comprising:  
ENDOCAM Performance HD Controller (5514101), ENDOCAM Performance Camera Head, 50 Hz (5514901), USB Flash Storage 8 GB (56540028), HDMI / DVI-D Cable lockable 3.0 (103843), remote control cable 1.5 m (5502991) and power cable (2440.03) .....**5514001**  
**ENDOCAM Performance HD Set 60 Hz**, as 5514001, but with ENDOCAM Performance Camera Head, 60 Hz (5514961) .....5514601

**ENDOLIGHT LED 1.1 Set**  
comprising: ENDOLIGHT LED 1.1 (5160001) and power cable (2440.03) .....51600011

**ENDOLIGHT LED 1.2 Set**  
comprising: ENDOLIGHT LED 1.2 (5161001) and power cable (2440.03) .....51610011

**ENDOLIGHT LED 2.1 Set**  
comprising: ENDOLIGHT LED 2.1 (5163001) and power cable (2440.03) .....51630011

Recommended monitor for ENDOCAM Performance HD  
**LCD Monitor 21.5"**,  
resolution 1920 x 1080, VESA 100 enclosure mount .....5370221  
Appropriate **stand**.....53701210

	Focal length f		Application	Image section	Type
<b>RIWO ZOOM lens</b> for 1/2" camera sensors	21 - 36 mm		universal		<b>85261.501</b>
<b>RIWO lens</b> with C-Mount thread and locking mechanism, immersible and autoclavable	24 mm		for endoscopes ø < 7 mm		<b>85261.242</b>
	32 mm		for endoscopes ø ≥ 7 mm		<b>85261.322</b>
<b>RIWO wide-angle lens</b> with rotatable locking mechanism and C-Mount thread, beam splitter 10% eye, 90% camera, immersible	24 mm		for endoscopes ø ≥ 4 mm		<b>5257.271</b>

05

www.richard-wolf.com

A 666 Ill. 15 en.3 KRAFT/KJUNG.5 We reserve the right to make technical changes.